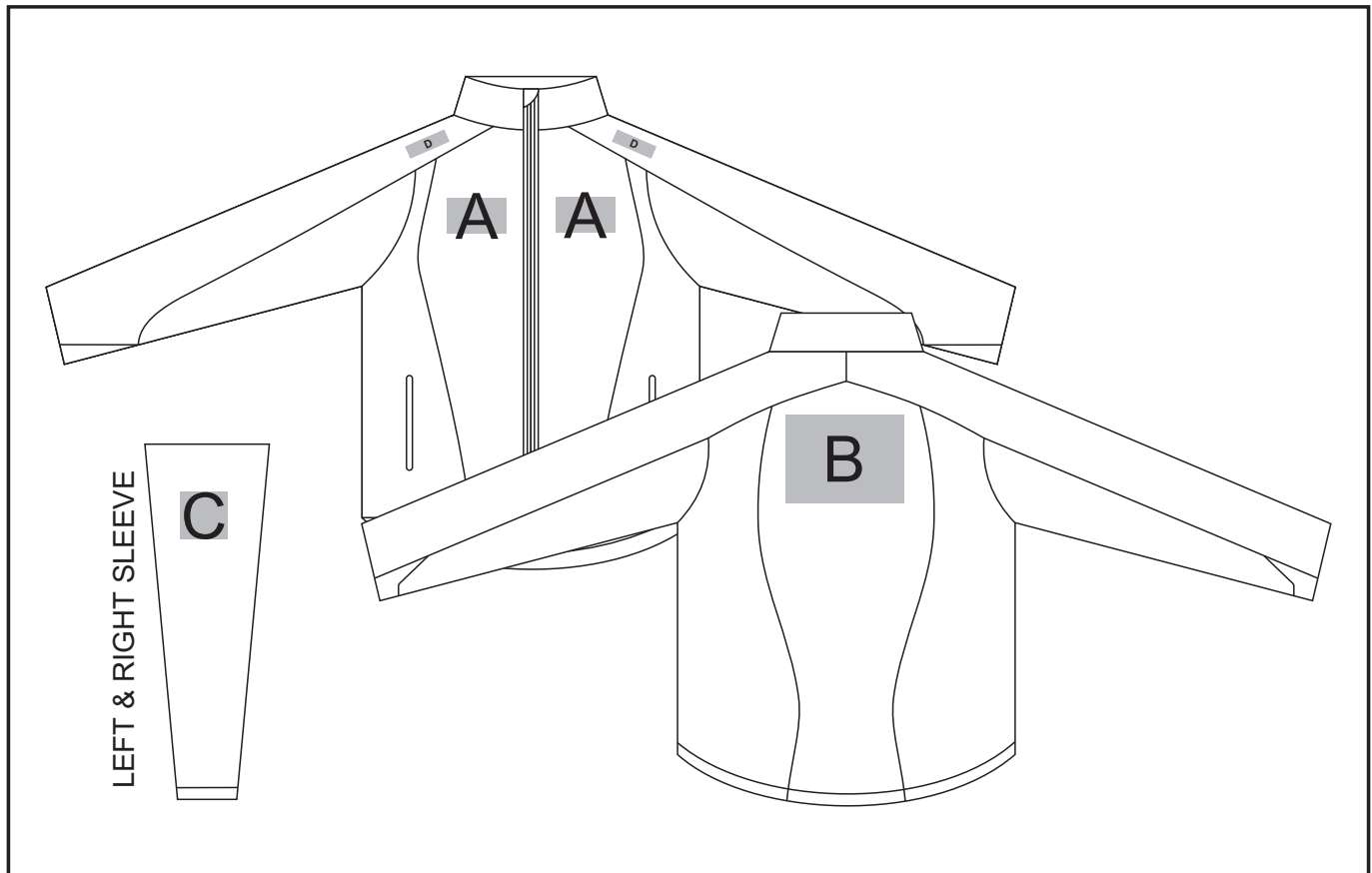


# BIZ-6501

## Geneva Softshell Jacket Ladies



### Need to know:

- Includes 1-Position Embroidery **OR** 1-Position Digital Transfer **OR** 1-Position Debossing (setup fee applies)

- **EMB/DTC inclusive parameters:** Left/Right Chest = 100mm x 100mm **OR** Back = 8000mm<sup>2</sup>

- Please note Pos D will be branded +/- 20mm from the top seam

### Branding Options:

#### **Position A**

1. Embroidery (EMB) - 9 colours  
Size: 100mm diameter
2. Screen Print (SC) - 6 colours  
Size: 100mm wide x 60mm high
3. Deboss (BOS)  
Size: 100mm wide x 60mm high
4. Digital Transfer Clothing (DTC) - Full colour  
Size: 100mm wide x 100mm high

#### **Position B**

1. Embroidery (EMB) - 9 colours  
Size: 180mm wide x 150mm high
2. Screen Print (SC) - 6 colours  
Size: 180mm wide x 180mm high
3. Deboss (BOS)  
Size: 150mm wide x 60mm high
4. Digital Transfer Clothing (DTC) - Full colour  
Size: 180mm wide x 150mm high

#### **Position C**

1. Embroidery (EMB) - 9 colours  
Size: 50mm diameter
2. Screen Print (SC) - 6 colours  
Size: 60mm wide x 60mm high
3. Deboss (BOS)  
Size: 50mm wide x 30mm high
4. Digital Transfer Clothing (DTC) - Full colour  
Size: 50mm wide x 50mm high

#### **Position D**

1. Digital Transfer Clothing (DTC) - Full Colour  
Size: 70mm wide x 20mm high